

## Open Spelter Sockets with Bolt and Nut OSS B

---

### Product information



Quenched and tempered cast steel range steel wire rope sockets for embedment with cast compound with mechanical values (Charpy-V > 42 Joule /-20°C) for tough and low temperature use. For wire rope diameter 6 - 203 mm (1/4" - 8").

2 surface finishes available:

- Model OSS B: blue painted. (OSS 196 - OSS 100 only hot dipped galvanized)
- Model OSS B.GAL: Hot dipped galvanized.

#### Features:

- Bolt securing by nut and cotter pin.
- All spelter sockets have a 100% efficiency.
- Also available with pin + cotter pin ( type OSS P )

... [Read more](#)

---

**Material:** Quenched and tempered cast steel

**Marking:** Size, wire rope diameter and batch or serial number.

**Temperature range:** From - 40°C up to +110°C - 100% capacity range.

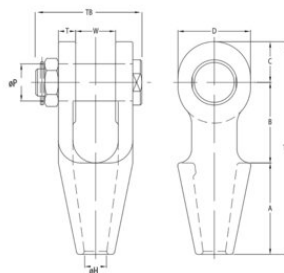
**Finish:** OSS B blue painted - OSS BGALV : Hot dipped galvanized.

**Note:** For intermediate rope diameter select fittings with nearest following size.

**Warning:** Compare the spelter's and the wire rope's minimum breaking load.

## Open Spelter Sockets with Bolt and Nut OSS B

Blueprint



## Open Spelter Sockets with Bolt and Nut OSS B

### Technical data

Part code	Code	Rope Ø range mm	MBL ton	Finish	Strand Ø mm	A mm	B mm	C mm	D mm	Ø H mm	Ø P mm	T mm	TLmm mm	TB mm	W mm	Weight kg
122100700252	OSS196B.GAL	6-7	8	Galvanized	-	50	40	19	34	9	16	9	109	62	19	0.5
122101000252	OSS197B.GAL	8-10	12	Galvanized	-	57	45	22	42	13	21	11	124	75	21	0.8
122101300252	OSS198B.GAL	11-13	20	Galvanized	-	64	51	27	50	15	25	12	142	80	25	1.1
122101600252	OSS199B.GAL	14-16	25	Galvanized	13	76	63	32	58	18	30	14	171	96	32	1.9
122101900252	OSS100B.GAL	18-19	40	Galvanized	14-16	89	76	40	70	22	35	16	205	107	38	3.1
122102200252	OSS104B.GAL	20-22	55	Galvanized	18-19	101	89	45	80	25	41	19	235	123	44	4.7
122102600252	OSS108B.GAL	23-26	75	Galvanized	20-22	114	101	60	104	29	51	22	275	141	51	8
122103000252	OSS111B.GAL	27-30	90	Galvanized	23-26	127	114	65	114	33	57	25	306	160	57	12
122103600252	OSS115B.GAL	31-36	125	Galvanized	27-28	139	127	72	126	39	63	28	338	165	63	16
122103900252	OSS118B.GAL	37-39	150	Galvanized	30-32	152	162	80	142	42	70	30	394	199	76	23
122104200252	OSS120B.GAL	40-42	170	Galvanized	33-35	165	165	88	156	45	76	33	418	209	76	28
122104800252	OSS125B.GAL	43-48	225	Galvanized	36-40	191	178	100	176	52	89	39	469	237	89	43
122105400252	OSS128B.GAL	49-54	280	Galvanized	42-45	216	228	108	194	59	95	45	552	263	101	62
122106000255	OSS130B	55-60	360	Painted	46-48	229	254	120	210	64	108	53	603	298	113	90
122106000252	OSS130B.GAL	55-60	360	Galvanized	46-48	229	254	120	210	64	108	53	603	298	113	90
122106800255	OSS132B	61-68	425	Painted	50-54	248	273	133	236	75	121	60	654	330	127	123
122106800252	OSS132B.GAL	61-68	425	Galvanized	50-54	248	273	133	236	75	121	60	654	330	127	123
122107500252	OSS135B.GAL	69-75	460	Galvanized	56-62	279	279	138	240	81	127	73	696	359	133	159
122108000252	OSS138B.GAL	76-80	560	Galvanized	64-67	305	286	146	252	88	133	76	737	380	146	190
122108600252	OSS140B.GAL	81-86	625	Galvanized	69-76	330	298	160	290	92	140	79	788	397	159	230
122109300252	OSS142B.GAL	87-93	720	Galvanized	78-86	356	318	178	320	99	152	83	852	419	171	287
122110200255	OSS144B	94-102	875	Painted	88-96	381	343	190	350	108	178	89	914	451	191	377
122110200252	OSS144B.GAL	94-102	875	Galvanized	88-96	381	343	190	350	108	178	89	914	451	191	377
122113000252	OSS150B.GAL	120-130	1,400	Galvanized	112-124	500	500	250	450	147	220	110	1,250	546	225	766