

Rope Pear Socket Nemag

Product information



The Nemag Rope Pear Socket is designed to, in combination with the Nemag Quick Release Link, smoothly pass over cable sheaves. The life span of the Nemag Rope Pear Socket generally surpasses that of the steel wire rope. The Rope Pear socket can be fitted by casting with a 2-component casting mass without the need for outside assistance, and ensures a strong connection. Nemag Rope Pear Sockets are suited to any type of steel wire rope.

... [Read more](#)

Material: High grade casted steel.

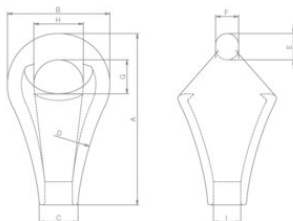
Marking: Manufacturers logo, size and batch number.

Warning: The specified capacities shown are for grab operation. For other applications use safety factor 5:1

Safety factor: 5:1

Rope Pear Socket Nemag

Blueprint



Technical data

Part code	Code	Rope Ø range mm	WLL ton	MBL	A mm	B mm	C mm	D mm	E mm	F mm	G mm	H mm	I mm	Weight kg
122102100120	RP-6	20-21	5	35	152	84	36	310	23	21	33	38	26	1.5
122102400120	RP-7	22-24	7	42.5	166	100	40	310	26	23	37	48	30	2.2
122102700120	RP-8	25-27	8	52.5	186	100	43	350	28	25	39	44	32	2.4
122103000120	RP-9	28-30	11	70	202	120	45	350	32	28	40	58	35	3.7
122103300120	RP-10	31-33	13	85	222	120	52	445	32	28.5	45	56	39	4.1

Rope Pear Socket Nemag

Combination of the Nemag Rope Pear Socket with Nemag Quick Release Link

A Rope Pear Socket can be fitted to a Quick Release Link of the same size, or to a link with a different size as indicated in table

Pear code:	Link code:
RP-2	
RP-3	RL-4
RP-4	RL-4 / RL-5
RP-5	RL-4 / RL-5 / RL-6
RP-6	RL-5 / RL-6 / RL-7
RP-7	RL-6 / RL-7 / RL-8 / RL-9
RP-8	RL-7 / RL-8 / RL-9
RP-9	RL-8 / RL-9 / RL-10
RP-10	RL-9 / RL-10 / RL-11
RP-11	RL-10 / RL-11 / RL-12
RP-12	RL-11 / RL-12 / RL-13
RP-13	RL-12 / RL-13 / RL-14
RP-14	RL-13 / RL-14 / RL-15
RP-15	RL-14 / RL-15
RP-17	RL-17