

## Thimble K5 - Solid

---

### Product information

We can deliver a high quality thimble solid K5 GN. Ductile iron GGG50 and painted and galvanized.

... [Read more](#)

---

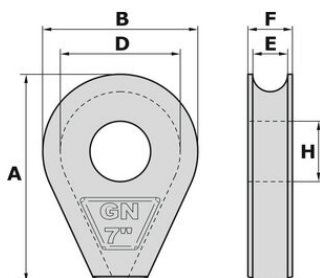


**Material:** Ductile iron GGG50.

**Finish:** Painted/galvanized.

## Thimble K5 - Solid

### Blueprint



### Technical data

Part code	Rope Ø range	Size inch	A mm	B mm	D mm	E mm	F mm	H mm	H max. mm	I max. mm	Weight kg/100pc
123100800130	7-8	2"	66	40	31	9	15	14	20	10	0.16
123101000130	9-10	2 1/2"	82	50	38	11	18	18	25	15	0.29
123101200130	11-12	3"	98	60	45	13	20	21	30	20	0.46
123101800130	16-18	4"	110	75	58	19	26	40	45	35	0.79
123102400130	22-24	6"	150	110	82	26	33	55	60	50	2.1
123103000130	25-30	7"	180	127	96	32	40	60	70	60	3.6