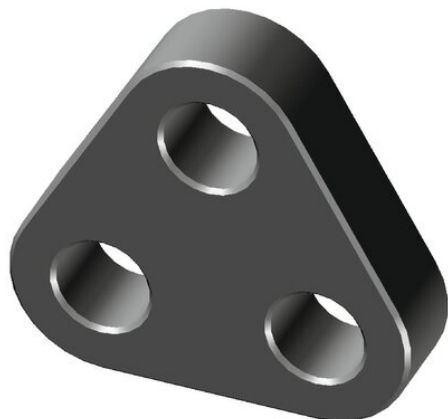


## Triangle Plate TR1 GN

---

### Product information



### **GN ROPE FITTINGS**

Grofsmederij Nieuwkoop B.V. - The Netherlands

When there is a minimum distance between the triangle plate and the gap required, we advise to use washers. Spacers on the triangle plate available on request ... [Read more](#)

---

**Material:** High tensile steel.

**Marking:** According to standard

**Temperature range:** -40°C up to +200°C, Polar Rated

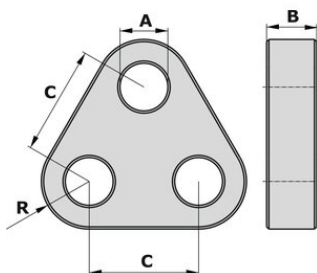
**Finish:** Painted.

**Standard:** EN 10204

**Safety factor:** 5:1

## Triangle Plate TR1 GN

### Blueprint



### Technical data

Part code	WLL ton	MBL ton	A mm	B mm	C mm	R mm	X mm	Y mm	Weight kg
429875002500	25	125	55	40	150	80	310	290	18