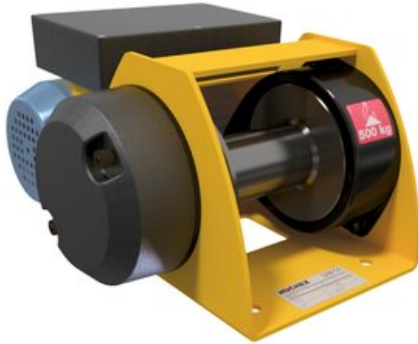


Electric winch MOTORBOX

Product information



Electric winch designed for simple lifting and pulling operations in different applications, ideal for replacing a manual winch. Capacities from 150 to 500 kg.

Available in two versions: - Direct control (CD) only for use protected from the weather. - Low voltage control (BT) ensuring user protection against electrical risks.

Applications:

- Maintenance
- Industry
- Manoeuvring hatches, doors etc.

Technical properties:

- FEM class: 1Dm - ISO M1 – Occasional use.
- Mechanically welded steel drum with wide flanges for safe and sound fastening of the rope.
- Greased reducer with helical gears.
- Automatic lack of current brake.
- Single phase 230 V motor brake with permanent capacitor - 50 Hz lifting type. Class F. Protection IP 54.
- Limit switches included.
- Direct control (CD models) only for use protected from the weather. Low voltage control (BT models) ensuring user protection against electrical risks.
- 3 buttons pendant control (Up - Down- Emergency Stop), not removable (3m long control cable).

Options:

- Wire rope and hook Tarpaulin cover

Marking: According to standard, CE-marked

Temperature range: -10°C to +50°C

Finish: Painted.

Standard: EN 13157, EN 14492-1

Safety factor: 5:1

Part code	WLL Type	Rope Ø	Speed top layer	Motor	Speed 1st layer	Number of layers	Max. drum capacity	A	B	C	D	E	F	G	øH	I	øJ	øK	L	M	Weight	
	ton	mm	m/min	kW	m/min		m	mm	mm	mm	mm	mm	mm	mm	mm	mm	mm	mm	mm	mm	kg	
5406MOTORBOX150BT	0.15	BT	4	10.6	0.37	8.3	3	15	358	207	329	154	114	15	77	10.5	123	54	122	76	79	20
5406MOTORBOX300BT	0.3	BT	5	5.9	0.37	4.6	3	16	438	212	341	200	144	35	88	13	124	63.5	138	118.5	100	29
5406MOTORBOX500BT	0.5	BT	6	3.6	0.37	2.6	3	13.5	438	212	341	200	144	35	88	13	124	63.5	138	118.5	100	29

Blueprint

