

Heavy Duty Swivel Eye-Eye, De Haan

Product information



Declaration of conformity, 3.1 Material certificate EN 10204.

Safety factor: 5:1

... [Read more](#)

Material: Alloy Steel Quenched and Tempered

Marking: According to standard

Temperature range: -20°C up to +180°C

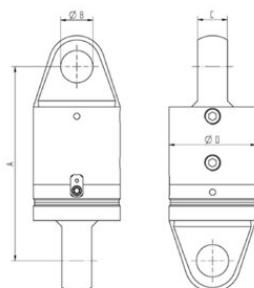
Finish: Painted

Standard: EN 10204

Safety factor: 5:1

Heavy Duty Swivel Eye-Eye, De Haan

Blueprint



Technical data

Part code	WLL ton	A mm	Ø B mm	C mm	Ø D mm	Weight kg
422503500460	35	378	60	70	170	52