

## Geared Trolley Powertex PGT-S2

### Product information



### POWERTEX

Powertex Geared Trolley PGT-S2 is a high quality, durable low built push trolley that is easy to install on horizontal beams and rails.

The trolleys can be used for I-beams with plane flanges (such as IPE, HEA or HEB types) or beams with sloping flanges (such as INP-beams).

The trolley can easily be positioned along the beam using the hand chain thanks to high quality steel wheels with bearings.

#### Features:

- Safe - All Powertex trolleys are proof load tested 1,5 x WLL
- Mechanical stops integrated in the design to prevent derailing
- Equipped with connection plate with eye to hoist's upper hook or direct connection
- Connection plate can be turned 90 degrees to allow direct connection to Powertex S2 hoists without need of intermediate hook/eye
- Rubber bumpers to absorb shock loads on impact to rail ending
- Equipped with RFID for quick registration and maintenance
- Marked with QR code to allow access to User manuals at any time
- PGT-S2 is easy to mount and dismount on a horizontal rail or beam
- The 3 piece design makes installation quick and ergonomically
- The shaft is easily locked using the Lock plate (No need to use large castle nut nor collar pins)
- Wheel shafts are robotic welded for high quality weld seams
- Large steel wheels equipped with double sided sealed bearings that do not need ... [Read more](#)

**Marking:** According to standard, CE-marked, WLL, beam width, individual serial number

**Temperature range:** -10°C up to +50°C.

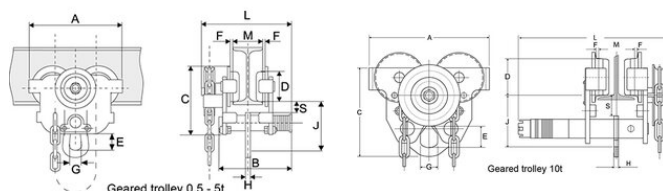
**Finish:** Black powder painted (Matt finish)

**Standard:** EN 13157, AS 1418.2

**Safety factor:** 4:1

## Geared Trolley Powertex PGT-S2

### Blueprint



### Technical data

Part code	WLL ton	Beam width mm	Model	Minimum radius mm	Hand chain length m	A mm	B mm	C mm	D mm	E mm	F mm	G mm	H mm	J mm	L mm	S mm	Weight kg
502600101400140	1	55-140	PGT-S2	1,000	3	242	211	174	68	30	1,5-2	32	10	118	254	28	12.4
502600201550140	2	65-155	PGT-S2	1,100	3	270	238	194	80	49	1,5-2	40	12	147	277	27	18.1
502600301600140	3	90-160	PGT-S2	1,300	3	325	246	234	100	60	2-3	49	14	177	287	29	30.3
502600501800140	5	90-180	PGT-S2	1,500	3	370	280	267	110	79	2-3	59	16	219	320	29	46.5
502600502300140	5	180-230	PGT-S2	1,500	3	370	330	267	110	79	2-3	59	16	219	370	29	48.2
502600503000140	5	230-300	PGT-S2	1,500	3	370	400	267	110	79	2-3	59	16	219	440	29	50.6
502601003050140	10	124-305	PGT-S2	2,000	3	442	-	396	136	137	2-3.5	92	30	190	525	45	94