

## Pad Eye S-264, Crosby

---

### Product information



- Excellent welding qualities.
- Widely used on farm machinery, trucks, steel hulled marine vessels and material handling equipment.
- Reference American Welding Society specifications for proper welding procedures.

... [Read more](#)

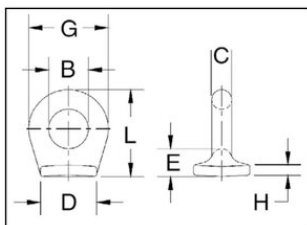
---

**Material:** Forged Steel — Quenched and Tempered.

**Warning:** Pad Eyes are designed to be attached to any structure, equipment, vehicles or machinery in which there is a need or desire for an eye, without the drilling and/or threading required for an eyebolt attachment. The normal method of attachment for pad eyes is by welding. Since Crosby cannot control the method of attachment (i.e. weld quality and size), a Working Load Limit is not provided for pad eyes.

## Pad Eye S-264, Crosby

### Blueprint



### Technical data

Part code	Size	B mm	C mm	D mm	E mm	G mm	H mm	L mm	Weight kg
421100050950	1	9.65	6.35	22.4	10.4	22.4	3.3	26.2	0.03
421100050955	1.5	16	6.35	25.4	11.2	28.7	4.05	33.3	0.047
421100120950	2	19.1	9.65	26.9	12.7	38.1	4.85	41.4	0.096
421100240950	4	25.4	14.2	36.6	19.8	54	5.6	59.5	0.237
421100330950	5	31.8	17.5	44.5	20.6	67	6.35	70	0.374