

## Wedge Socket 3000

---

### Product information



**General:** Intended for attaching of wire rope where switching often occur, e.g. blocks of mobilecranes, or to be able to adjust the length of the wire rope. See recommended assembly to get correct results.

**Design:** Bended and welded house made of plate. Wedge made of plate with milled groove and symmetrical shaped to avoid error assemblies. Turned bolt with head, low nut and split cotter. The wedge sockets is delivered complete. Note that some wedge houses fit to different sizes of wedges.

**Marking house and wedge:** Dimension area.

**Proof:** Batch proof 2 x WLL.

... [Read more](#)

---

**Material:** House, wedge and bolt by high-tensile construction steel.

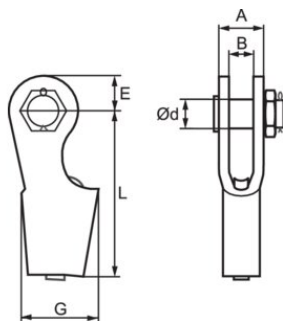
**Finish:** Electro-zink plated

**Note:** To elevators and mines we recommend other designs.

**Safety factor:** 5:1

## Wedge Socket 3000

### Blueprint



### Technical data

Part code	Code	Rope Ø range mm	WLL ton	MBL	Finish	A mm	B mm	E mm	G mm	L mm	D mm	Weight kg
121500900091	3001A	8-9	2	10	Electro galvanized/Zinc plated	30	16	29	70	145	27,5	1.3
121501000091	3001B	10	2	10	Electro galvanized/Zinc plated	30	16	29	70	145	27,5	1.2
121501200091	3001C	11-12	2	10	Electro galvanized/Zinc plated	30	16	29	70	145	27,5	1.2
121501400091	3004A	13-14	5	25	Electro galvanized/Zinc plated	60	34	44	96	216	31,5	4.6
121501700091	3004B	15-17	5	25	Electro galvanized/Zinc plated	60	34	44	96	216	31,5	4.4
121501900091	3005A	18-19	6	30	Electro galvanized/Zinc plated	66	40	50	110	245	39,5	6.2
121502300091	3006A	20-23	9	45	Electro galvanized/Zinc plated	72	40	50	120	280	39,5	8.7
121502800091	3007A	24-28	12	60	Electro galvanized/Zinc plated	75	42	67	140	327	43,5	13
121503200091	3008A	29-32	20	100	Electro galvanized/Zinc plated	104	60	75	245	555	65	40
121503600091	3008B	33-36	20	100	Electro galvanized/Zinc plated	104	60	75	245	555	65	39