

## Superclamp Fixed Jaw Adjustable Girder Clamps

---

### Product information



Fixed jaw adjustable girder clamps are truly versatile in application and may be used for lifting, pulling, or as an anchor point. Designed specifically to provide maximum grab width adjustment. These products are engineered for practical use where mobility is essential. The clamps are speedily applied and do not require additional tools or width adjusting components, such as spacing washers. The left and right-hand threaded adjusting bar ensures a secure grip on the beam flange. Incorporating adjusting mechanism and lifting shackle.

**Proof load:** 2 x WLL.

[... Read more](#)

---

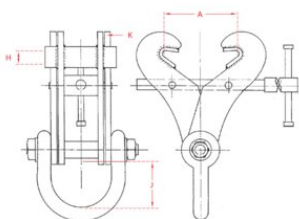
**Finish:** Yellow painted.

**Note:** All WLL apply to vertical lifting only.

**Safety factor:** 5:1

## Superclamp Fixed Jaw Adjustable Girder Clamps

### Blueprint



### Technical data

Part code	Code	WLL ton	Beam width	A mm	H mm	J mm	K mm	Weight kg
502300201900060	S1  mm	2	76-190	76-190	22	95	3	4
502300301900060	S2  mm	3	76-190	76-190	22	95	6	5
502300301900061	S2A	3	76-190	76-190	22	95	12.5	8
502300402540060	S3	4	150-254	150-254	22	100	10	11
502300604570060	S4S	6	203-457	203-457	42	105	12.5	18.5