



Lifting Eye TAPG/TAPG-S

Product information

The eyes can be loaded with working load limit in all directions. All the eyes are pivoted to avoid breakage in the eyes, which also make it possible to fold it aside when it is not used.

Model TAPG: Lifting D-Ring and Bridge - without Screws.

Model TAPG-S: Lifting D-ring, bridge and 2 screws 8.8 EN 24014 (DIN 931)

Attachment-point, bolt-on type, in working
load limits of 3 - 8 t.

Features:

- Compact design
- Secured four times against breakage
- Working range 120°
- Bolt on plate also serves as marking stencil

The D-link must be able to move freely. The load take-up may not be supported on edges or on the sling point.

Material: Eye of alloy steel.

Marking: CE-marked, UKCA-marked, WLL.


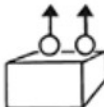

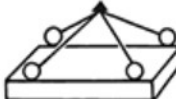
Note: The surface that the lifting eyes shall be attached to shall be flat and tolerate the load it is going to be exposed to.

Warning: Only screws with a minimum strength class of 8.8 EN 24014 (DIN 931) may be used

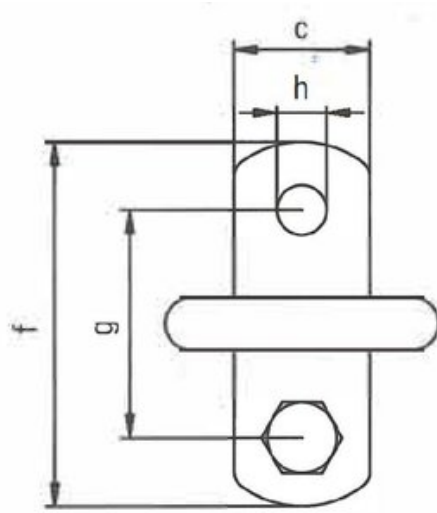
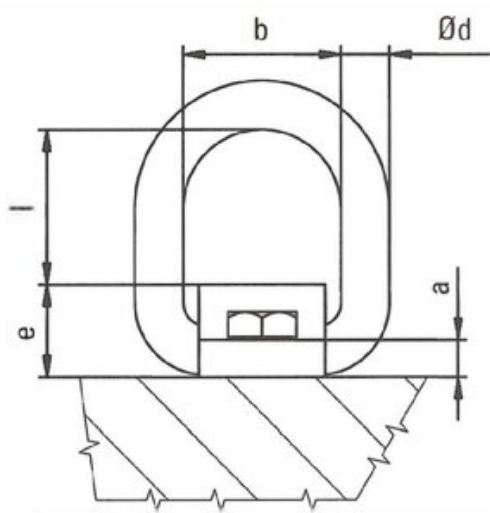
Safety factor: 4:1





Part code	Code	WLL ton	Thread mm	Torque Nm	Screw mm	a mm	b mm	c mm	Ø d mm	e mm	f mm	g mm	h mm	l mm	Weight kg
42150380503300	TAPG-S 3	3.15	M20	210	M20 x 45	12	56	50	18	34	130	90	21	51	1.43
42150380505300	TAPG-S 5	5.3	M24	290	M24 x 55	15	67	60	22	42	160	110	25	63	2.58
42150380508300	TAPG-S 8	8	M27	550	M27 x 65	20	80	70	26	55	190	130	28	67	4.38

Technical data

Kind of attachment							
Number of pieces	1	2	2	2	3 o. 4	3 o. 4	
Inclination angle	0°	0°	0°	0°-45°	45°-60°	0°-45°	45°-60°
	WLL	WLL	WLL	WLL	WLL	WLL	WLL
Code	t	t	t	t	t	t	t
TAPG-S / TAPG 3	3,15	4,75	9,5	4,25	3,15	6,3	4,75
TAPG-S / TAPG 5	5,3	8	16	7,1	5,3	11,2	8
TAPG-S / TAPG 8	8	12	24	11,2	8	16	12

Blueprint



Anschlagart load of attachment											
Stück / number of pieces		1	2	2	2	3 or 4	3 or 4				
Neigungswinkel inclination angle		0°	0°	0°-45°	45°-60°	0°-45°	45°-60°				
Berechnung Calc.		Nominal WLL min. WLL [t]	Working load limit WLL [t]	Working load limit WLL [t]	Working load limit WLL [t]	Working load limit WLL [t]	Working load limit WLL [t]	Schraube screw [mm]	Anschluß- moment tightening torque [Nm]		
TPG 3	3	3.15	4.75	9.5	4.25	3.15	6.7	4.75	M20	210	
TPG 5	5	5.5	8	16	7.5	5.5	11.2	8	M24	290	
TPG 8	8	8	12	24	11.2	8	17	11.8	M27	370	